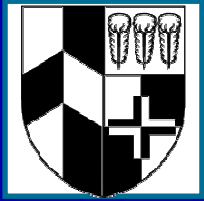


Patient utilisation of a cardiothoracic wound clinic:

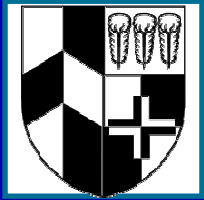
Potential to reduce complications and readmission rates

Sammra Ibrahim
Surgical Care Practitioner
London Chest Hospital



Surgical Site Infections (SSI's)

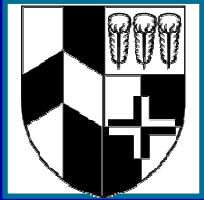
- ~4.5% of cardiac surgical patients develop an SSI
Cristofolini et al, 2012
- Those patients undergoing CABG with SSI's had:
 - increased mortality at 1 yr (22% vs. 1%)
 - ~20 additional days in hospital
 - costs approximately \$20k extra per patient*Hollenbeak et al, 2000*
- Mortality higher with deep (19.2%) compared to superficial / no SSI (4.5%)
Coskun et al, 2005



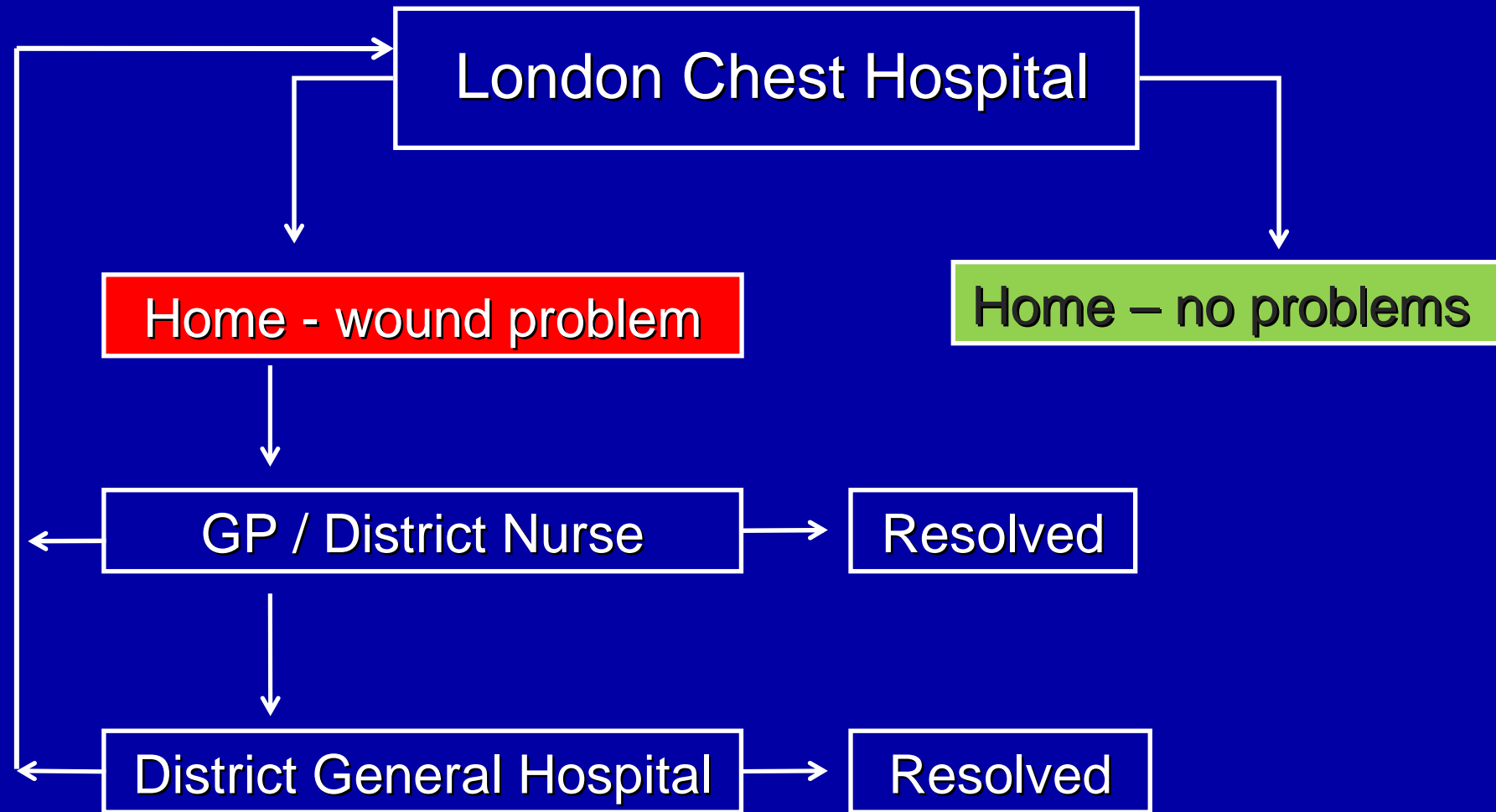
National / Local figures

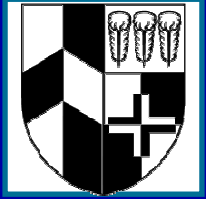
	No. of CABG + Cardiac (not CABG) Operations	Number of SSI's (inpatient + readmissions)	%
National 2006-2011	27,754	1,185	4.3
LCH 2011 Jan-Oct	439	16	3.6
LCH 2012 Jan-Oct	436	11	2.5

[Health Protection Agency. Surveillance of surgical site infections in NHS hospitals in England, 2010/2011. London: Health Protection Agency, December 2011. Available from: www.hpa.org.uk]



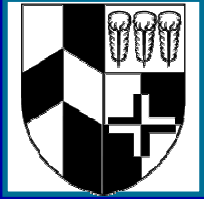
Previous Practice at LCH





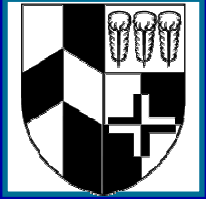
Reasons for a Wound Clinic

- Point of care
- Service improvement
- Reduce readmissions rates



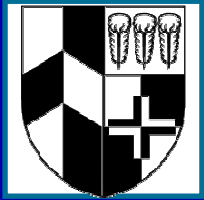
Methods

- From Jan 2012: All patients given information about the Wound Clinic
- Encouraged to directly self-refer if concerned
- GP Practices advised about Wound Clinic
- Tertiary referral from GP / hospitals

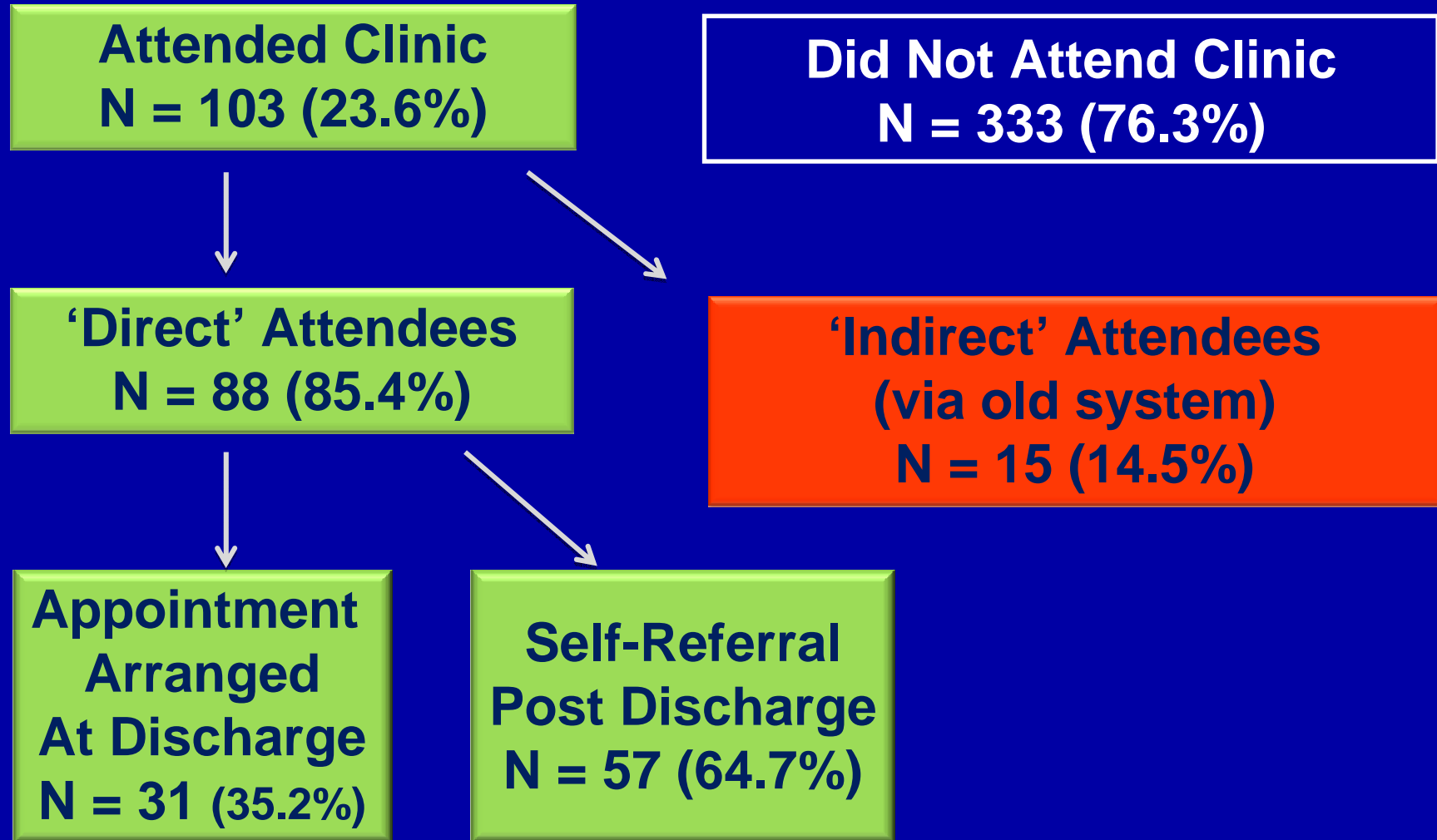


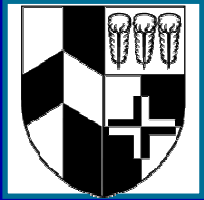
Data collection

- Audited patient utilization of the Wound Clinic in first 10 months (Jan-Oct 2012), including:
 - mode of presentation
 - time to presentation
 - severity of wound



Information Given to 436 patients

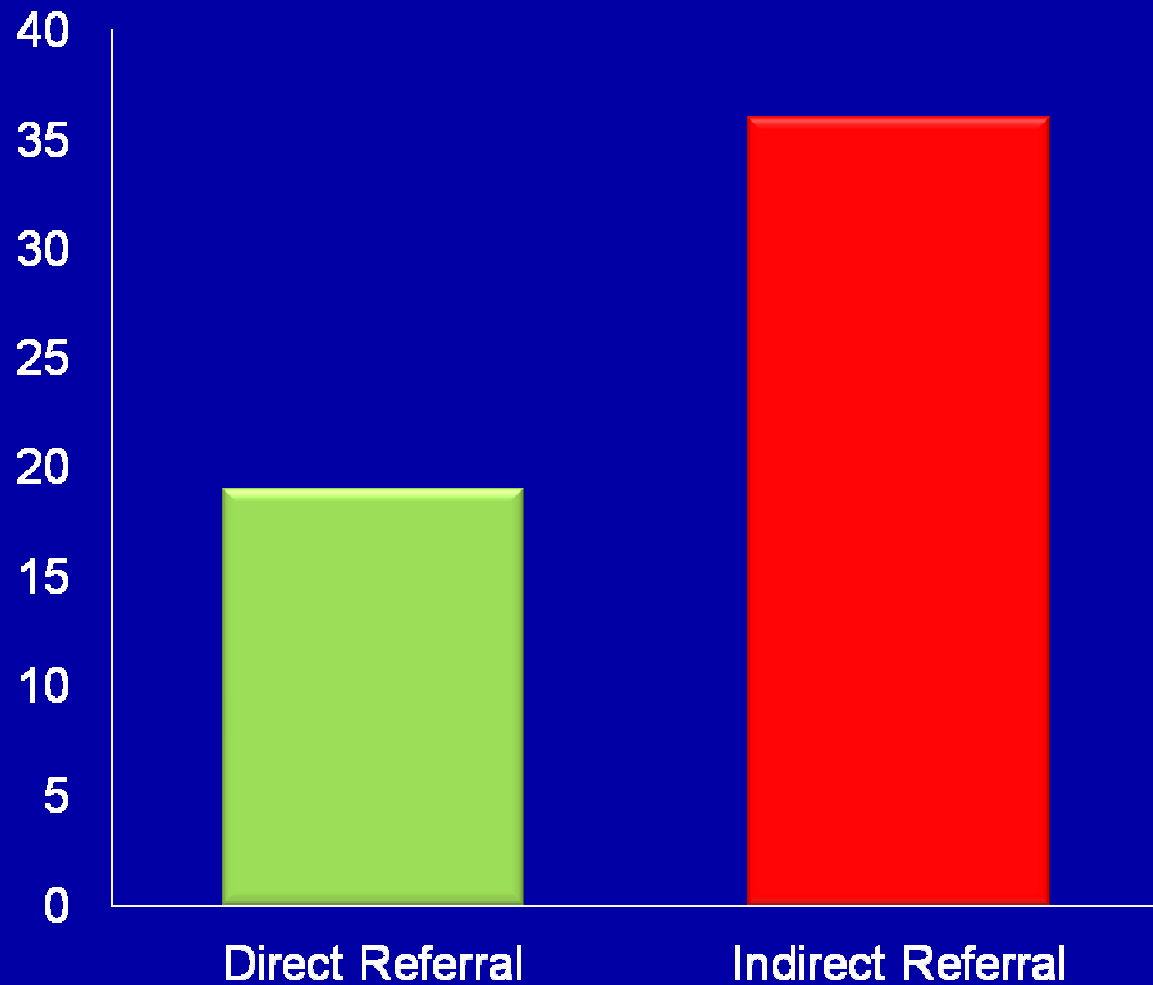


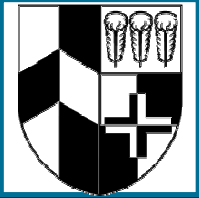


Time to Presentation

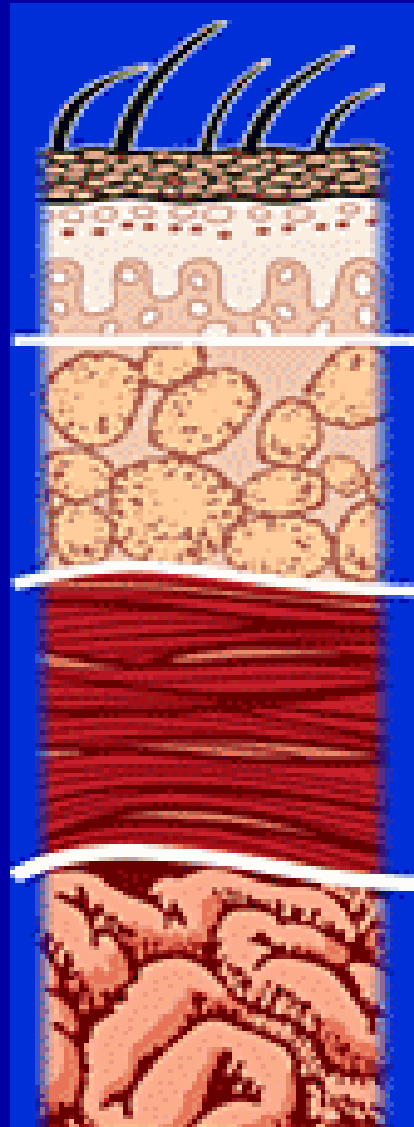
Median No. of
Days to Clinic
Presentation

$P = 0.002$





CDC Classification of Wounds

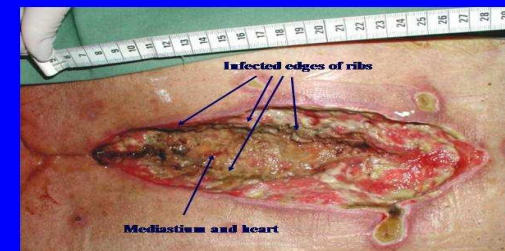


Superficial

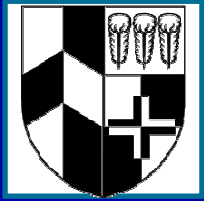
Deep/
Dehiscent



ICNSO STERNAL NECROSIS AFTER AORTO-CORONARY BY-PASS OPERATION



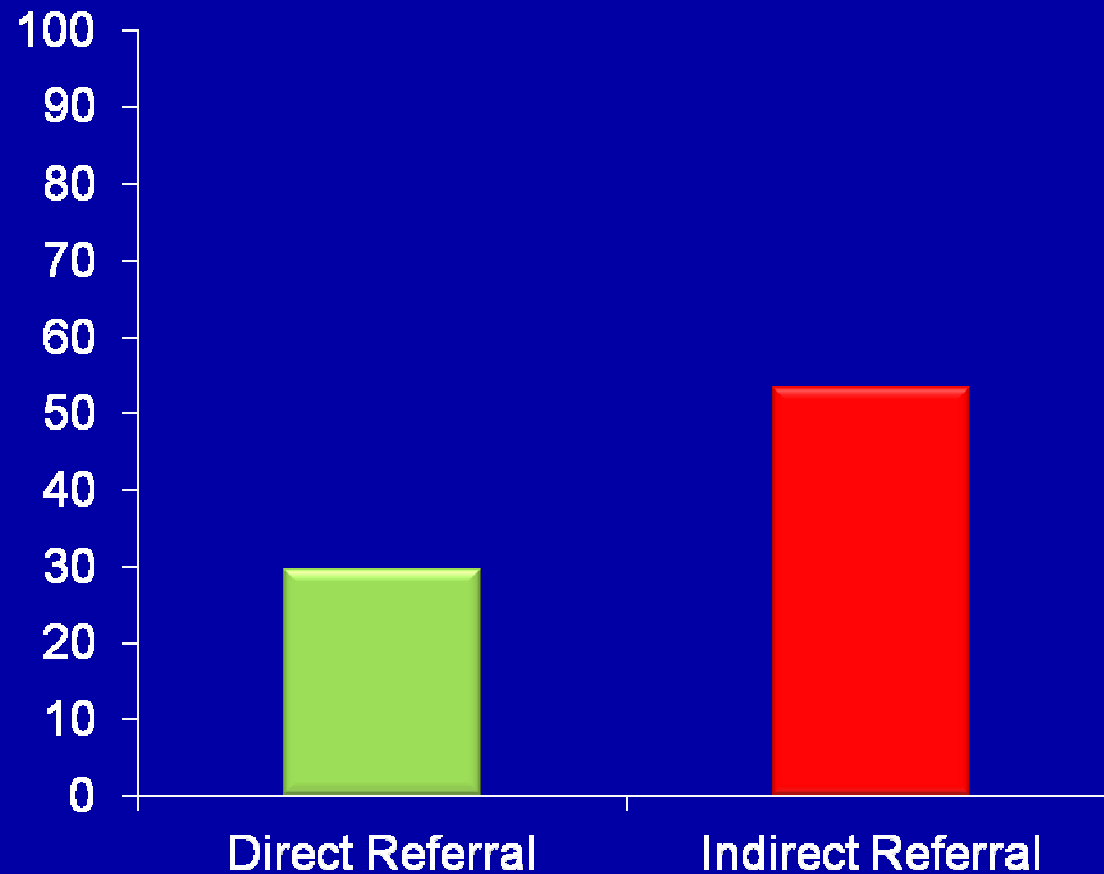
Ref: Centres for Disease Control and Prevention 1600 Clifton Rd. Atlanta, GA 30333, USA

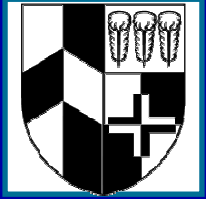


Wound Severity

Percentage of Patients with Deep / Dehiscenced Wounds

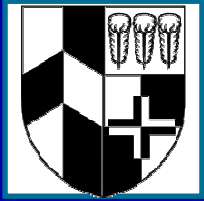
$P = 0.070$





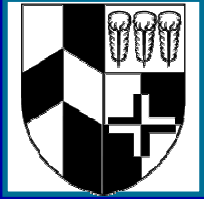
Patient Perspective

- All patients surveyed were happy with the service provided
- Approximately half (56.6%) surveyed had attended the Clinic for > 1 month
- Half of patients attended the Clinic at least twice a week, initially.



Summary

- A Wound Clinic run by the primary surgical team can allow early identification + treatment of SSI's
- In the first 10 months, approximately 1-in-4 patients utilised our Wound Clinic
- Patients appear to be happy with the service
- Estimate that we have prevented readmissions to hospital / reduced costs



Further Work....

- Means of encouraging more patients to directly self-refer to wound clinic
- Educating the patient in early assessment of potential wound problem
- Understand risk factors for re-admission so that patients can be identified whilst still in hospital.
- Develop an e-learning tool to increase understanding and management of wound severity / treatment.